



ISSUE 340 WANDONG/HEATHCOTE JUNCTION MONTHLY NEWSLETTER : SEPTEMBER 2024 ABN 17 022 858 565

Email—whatsnewswhj@gmail.com 700 copies

EDITOR - Allen Hall, 20 North Mountain Rd, Heathcote Junction 3758 Ph - 0413 832 411
Delivered to Wandong/Heathcote Junction/Wallan/Kilmore/Broadford/Whittlesea & Upper Plenty

Copy online at www.wandong.vic.au



"What's News" is produced as a non-profit newsletter for the Wandong / Heathcote Junction Community. The opinions expressed in this newsletter are not necessarily those of the editors. Publication of Advertisements should not be taken as endorsements of products. Letters to the editors are always welcome, but will only be considered for publication with authentic names and addresses available for publication. Although every care is taken in preparing "What's News" the editors cannot accept any responsibilities or liabilities for errors or omissions.

THIS EDITION OF "WHATS NEWS" CELEBRATES THE LIFE OF SUE MARSTAELLER OAM JP

Sue Marstaeller passed away on Monday 26th August aged 67. Her passing will be felt by many. Huge respect for Sue was evident when several hundred attended her commemoration service on Friday 6th September at the Hidden Valley resort.

Despite her many ailments, Sue never complained and maintained her involvement in many community groups and activities until her death.

The Wandong Heathcote Junction Community is indebted to Sue for the contribution she made by participating in almost every group and project for over 30 years. Sue was always supporting our school, sporting and service groups and she was committed to our projects such as the landscaping of the Epping Kilmore Road through Wandong, the Wandong bush-fire memorial park, war memorial, Davern Reserve improvements and much much more. The Sue Marstaeller Pavilion in Davern Reserve was named to recognise her numerous achievements at Mitchell Shire and her unrelenting devotion and commitment to Wandong Heathcote Junction.

Her involvement extended to Mitchell Shire as Councillor and Mayor (3 times) where her impact was even greater. Pages 16 and 17 of Whats News lists many, but not exhaustive, list of her achievements.

In 1995 Sue (and Sharon Saw) introduced Whats News to our town and district and was editor until 2009.

Lets celebrate the achievements and community devotion of this remarkable life of a remarkable woman, Sue Marstaeller.



IF YOU MISS AN ISSUE OF "WHATS NEWS" go to website <www.wandong.vic.au/local-news/whats-news>

Wandong - Heathcote Junction - why would you live anywhere else. Until October 2024, Allen Hall (editor)
NEXT ISSUE DEADLINE: COPY & ADS 5 October 2024 DELIVERY from 16 October 2024

Printed by Newspaper House, Kilmore

WANDONG FIRE BRIGADE



Vale Sue Marstaeller OAM JP

Sue Marstaeller was a member of the Wandong Fire Brigade, her commitment spanned nearly 30 years with the brigade, where she served not only as a firefighter and Lieutenant but also as Treasurer for 15 years. Sue was awarded the National Emergency Medal for her service during the Victorian 2009 Black Saturday fires.

Sue was instrumental in the biggest recruitment event of the Wandong Fire Brigade. Many years ago, Sue was at the Primary school Parents Club and the siren was going off repeatedly, but there were not enough firefighters to turn out. Sue suggested to the parents present that they could do something about it. Following that conversation, about 15 women joined the fire brigade, greatly enhancing the brigade's daytime operational capacity.

Sue co-founded the What's News newsletter with her friend Sharon. This monthly publication, produced and distributed by dedicated volunteers including Sue, kept the local community informed and engaged. She played a crucial role on the organising committee of the highly popular Wandong Country Music Festival and was also the local Avon lady.

Sue was a passionate advocate for inclusion and diversity, serving on the CFA North-East Region Diversity and Inclusion Advisory Council since 2018. Her efforts in this area, along with her broader community service, underscored her lifelong commitment to making her community a better place. She was instrumental in advocating for improved facilities and supporting the rights of vulnerable community members.

Sue died on the 25th August 2024 and was laid to rest on Friday the 6th September. The brigade send their thoughts to Sue's husband Ian, and their children Kim, Guy, and Ali, and their families at this time, and we thank her for her service.



What's Happening

WANDONG OUTSIDE SCHOOL HOURS CARE



Service Phone Number:
0497 877 771

Your service coordinator will be available during session times. TheirCare support is available during office hours if required on 1300 072 410

How to Enrol

Visit TheirCare website: www.theircare.com.au and click on 'Book Now' in the top right hand corner to register your child's details.

Operation Times

Before School Care 6:30am – 8:45am

After School Care 3:30pm - 6:30pm

Pupil Free Day 6:30am – 6:30pm

Holiday Program 6:30am – 6:30pm



MYKI RETAILER

GAZEBOS AND CHAIRS FOR HIRE

For your next function why not hire a gazebo and chairs from the Wandong – Heathcote Junction Community Group.

For hire are:
two 6m X 3m gazebos,
a 3m X 3m gazebo
8 wooden trestles
and 50 outdoor chairs.

Call David on mobile
0409 164 660
to arrange hire.

COMMUNITY WEBSITES

www.wandong.vic.au
www.upperplenty.com

Mitchell Bushwalking Group

The group walks once a fortnight, with some evening walks during the summer months.

Please contact:
Mary 0428 479 469
or Wayne 0451 519 734
or email
mitchellwalksgroup@gmail.com

for more information

Mitchell Photography Club Inc

Visit our website
(www.mitchellphoto.org)
and click on "About Us"

meets third Wednesday of
the month
(except January) at 7:30pm

Broadford Community Centre

Contact Sarah 0438 847 577
for more information.

BIRTHDAY GREETINGS

We wish the following
people a very happy
birthday

12 Sep	Anne Dale	W
13 Sep	Paul Kurzman	W
13 Sep	Greg Barnes	HJ
14 Sep	Greg Ampfer	HJ
14 Sep	Jenn Leddin	HJ
15 Sep	Mark Page	C
15 Sep	Ingrid McHenry	W
16 Sep	Ray Bradshaw	W
17 Sep	Kristian Weller	HJ
17 Sep	Nicole Burns	HJ
18 Sep	Robyn Beer	K
19 Sep	Caleb Walsh	HJ
21 Sep	Lisa Dennehy	HJ
21 Sep	Joel Lotherington	K
21 Sep	Joanne Brown	HJ
22 Sep	Lucy King	Wallan
23 Sep	Adrian King	K
23 Sep	Ray Candy	W
24 Sep	Aaron Thomas	B
25 Sep	Ann Marie Hogan	W
25 Sep	Emily Page	WP
25 Sep	Corey Stone	HJ
27 Sep	Marj Knight	W
28 Sep	Joelie Coter	W
30 Sep	Tye Duncan	HJ
1 Oct	James Dodds	W
2 Oct	Frank Amoroso	HJ
3 Oct	Bette Sartore	W
3 Oct	Joshua Stone	HJ
6 Oct	Francesco Amoroso	HJ
6 Oct	Emelia Amoroso	HJ
8 Oct	John Simpson	HJ
8 Oct	Draga Kovacic	C
9 Oct	Geoff Symons	HJ
9 Oct	Kerry Bellomo	HJ
9 Oct	Kate George	W
9 Oct	Steven Belfiore	HJ
10 Oct	Daniel Bellomo	HJ
11 Oct	Owen Philp	OG
11 Oct	Karen Telfer	W
11 Oct	Luke Smith	HJ
11 Oct	Anne Humphries	W
12 Oct	Emily McCarthy	HJ
12 Oct	Taylor Austin	HJ
12 Oct	Brandon Austin	HJ
12 Oct	Dylan Stone	HJ
13 Oct	Liz Symons	HJ
13 Oct	Thomas Gough	HJ
13 Oct	Dylan Cole	B
14 Oct	Abigail Delaney	W
14 Oct	Jenny Philp	OG

GET "WHATS NEWS" BY EMAIL

If you would like
to receive "Whats News"
by email each month,
send your name and
email details to :

whatsnewswhj@gmail.com



Wandong IGA

It's all about locals and how they like it!

**Open every day
8am-8pm**

Come on in and support your local store.

See in store for many great specials.

Great Range of:

- Groceries
- Meat
- Produce
- Deli
- Dairy
- Freezer
- Liquor

Wandong Licensed Supermarket
3272 Epping Kilmore Rd, Wandong

5787 1911



LOCAL CHURCH NEWS

Whittlesea Anglican Church

Serving Whittlesea, Upper Plenty & surrounding areas

Christ Church: 9 Wallan Road, Whittlesea.
Vicar: Rev Ruwan Palapathwala 9014 0696

Web Site: www.christchurchwhittlesea.org

Weddings/Baptisms by appointment

Sunday Services: 10.15am. Incl kids program

Services to the Community:

Whittlesea Opportunity Shop 7 Laurel St
9716 3144 Open M-F 10-4 Sat 9.30-12.30

Christ Church Craft Group

Friday 10-2, Church Hall BYO craft - any type

we love to learn, Jenny 9715 1137

Anglican Care: quality provider aged services
www.anglican care.com.au

Jobs at Anglican Care www.careerjet.com.au



Wandong District Church **29 Wandong Ave, Wandong**

Letting the LIGHT Shine

Services held at 5pm Sundays

ALL WELCOME

Enquiries to:

Pastor Allan Laurens 5787 1020

Or David Moran 5787 1738

ST JOHN'S ANGLICAN CHURCH, WANDONG

WANDONG AVE, WANDONG

Enquires 9308 2452

Services: 8.30am
on 1st & 3rd Sundays

ALL WELCOME



FREEDOM CHURCH

To equip and release people into their God given destiny

Meeting at 10.30am every Sunday
at the Freedom Care Building,
127c Northern Highway Kilmore Vic
— entrance on Willomavin Road

Enquiries to ;

Pastor Frantz Heinzelmann

Mobile: 0411 794 188

www.freedomcarechurch.org.au

All Welcome. Love to see you there

KINDNESS IN ACTION NEEDED

All of our countries seem to be in some form of crisis. Oh, how we need God to intervene on our behalf. Nowhere to go! Many people are devastated and are feeling frustrated, fearful, anxious and unsure of their future, grieving for the losses around their lives.

People are becoming less trusting, not always reaching out in kindness in case there are repercussions or violent reactions.

Good people are amongst it all. So let us reach out to all people in kindness, showing we care, making life a little happier in these difficult times.

The Bible shows us in *Philippians 4 verse 32: To be kind and compassionate to others in times of joy and also in times of sadness.*

Kindness cares and there are many who feel right now that nobody cares about them. Anyone can be kind, whether they be Christian or not.

We see this fruit reaching perfection in people like Mother Theresa who everyday of her life wore the stamp of kindness, choosing to grow kindness from that seed of God planted within her. Many were nourished as they received this luscious fruit from her life.

Kindness is not expecting to gain. Kindness smiles into tired eyes and lends a hand and we are supposed to be the hands and feet like Christ. Kindness feeds the hungry. Kindness weeps with those who weep. Kindness always reaches out and touches. Kindness needs to find its loveliest expression in our homes and hearts.

So, I challenge each person who reads this article to look around, find a need and fill it, find a hurt and heal it.

This article has been inspired by the thoughts expressed by Shirley Kawalski.

WANDONG HISTORY GROUP

This has been a sad month for our group with the loss of two people who have done so much in many ways to help us achieve much we have done over the years.

Dennis Potts of the Whittlesea RSL, a real friend of Wandong History group. Dennis was there when we needed help and advice when setting up the Wandong War Memorial. He and his committee helped out with financial assistance, and were always honoured guests at our memorial services.

VALE DENNYS POTTS.

We also lost a real friend to our town in Sue Marstaeller, someone who always put Wandong Heathcote Junction first with all of the work she did on different committees around our town. She was one who worked very hard to get the history group going, and was always there if help was needed, W.H/J will miss her greatly.

VALE SUE MARSTAELLER OAM JP

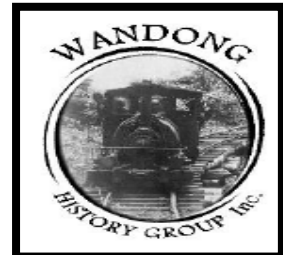
But life goes on and so does what with have planned for our HISTORY WEEK display this year. We are concentrating on the 150 years since the railway came to Wandong. This will be held at the Wandong hall on Saturday 26th October 2024 from 10 am till 3 pm. We will be displaying many photographs of our past, including some never seen before pictures of Wandong in the early 1900s. I hope to see you there.

And to those who have asked, Karen is progressing well after her knee operation, but it will take time before she is up and about, good luck with your rehab..

DAVID MORAN

Acting President.

Wandonghistorygroup4@gmail.com





Classes held at:
R.B Robson stadium
Wallan, 3756

Recreational & Competition Gymnastics

- Morning classes from crawling to 5years
- Afternoon classes from 5 years to adult
- Classes available Monday – Wednesday
- Trial class available for first time members

Visit our website for more information

BirraleeGymnastics.com.au



**BONNIEVIEW
WINDOW CLEANING**
Residential, Commercial, Builders

Over 25 years experience

David
0448 564 414



**ALL PROTECT
SECURITY SOLUTIONS**

Find us on Facebook

Phone Nathan 0419 585 773
Email info@allprotectsecurity.com.au

- Intruder Alarm Systems
- CCTV Cameras
- Intercom Access Control
- Data & Networking
- Home Automation & Audio Visual




**Anyone wishing to join
Kilmore District Mens Shed
Should contact
John Perrett 0418 288 024 or
Ron Hamilton 0481 268 471**

*Operating hours are
Tuesday and Thursday
9.30 am - Approx. 1.30 pm*

email: Kilmoremensshed@gmail.com

**WANDONG AUSTRALIANA
MOTEL - TAVERN - RESTAURANT
BROADHURST LANE, WANDONG**



•FULLY LICENSED•SMORGASBORD
•A LA CARTE•ACCOMMODATION

**ENQUIRIES AND
BOOKINGS:
(03) 5787 1401**

**The Kilmore &
District Hospital**



Rutledge Street, Kilmore Phone: (03) 5734 2000

**Urgent Care Centre
(Open 24/7 with Registered Nurses)**

- Acute Ward (30 beds)
- Maternity (including antenatal classes and dietician)
- Oncology
- Surgical Procedures
- District Nursing
- Aged Care –
- Dianella Hostel and
- Caladenia Nursing Home

Website: www.kilmoredistricthospital.org.au



GARDEN SCENE WITH GAIL

Spring is a fantastic time in the garden with new buds opening on our fruit trees, roses and a huge selection of flowering plants. They have been sleeping and now they are ready to push new growth and work hard to provide all the nutrients needed for a stunning Spring display, that in many cases will flow over into Summer. This is the time to provide a helping hand to nature to make the journey a little easier for them and we are rewarded with long blooms of flowers and in many cases these flowers will develop into fruit for us to bottle or just enjoy off the tree. If the soil which the plant is growing in is on the hard side and water is already flowing off it instead of into it, a good application of Seasol – soil super wetter would be very beneficial and top dress with well-rotted cow manure. Be super vigilant to not allow any of this particular product to come into contact with any *foliage* as it has the potential to kill the plant. If applied correctly it will allow moisture to get to the roots where it's needed, along with nutrients to feed the plant. If the plant is on an incline without a 'well' around the base it will be inclined to dry out quicker than say a plant on level ground or in a moister area. Prevailing winds may also have an impact on moisture loss around a plant and these aspects need to be considered when planting and/or maintaining plants. If you would prefer a more natural approach to aiding moisture retention, a mild, soapy water solution can be a great idea. Be conscientious of warm winds as they can dry the soil out unbelievably particularly with potted plants and hanging baskets. (Sometimes a double layer of fibre in hanging baskets can be beneficial). A really generous, deep watering, even weekly is better than lots of light waterings that may encourage roots to come to the surface opening the plant up to drying out further. Drying out is as damaging to new plants as is frost but at least with frost, as the plant grows and gets taller, it can be less susceptible to the cells of the leaves freezing and bursting, 'frost burn'. September can be a busy month with pruning of Daphne, possibly to take cuttings, and also some of the Camellias, feeding of all your plants, pruning citrus before the Summer sun gets up high and getting those pesky weeds out, wish our plants grew as quick as them! Remember the bulbs, using a liquid fertiliser so they can readily take it into the bulb itself ready for next year's flowers. It can also be a nice month for planting those extra plants that you may have missed in Autumn/Winter or a special plant that you have



found with striking bark such as the deciduous Japanese Maples, in particular the Kango Kaku – the Coral Bark Maple with its stunning pink/red bark, such a feature even without the glorious leaves. This is a great month to choose plants for their blossom, Cercis, Prunus, Ornamental Pear, Ornamental Cherry, and many more, such an amazing variety. It's also a good month to plan and implement a new paved area, arbour, pathway, any garden feature that requires drier weather to complete. This is also a good time of the year to prepare another garden bed, the soil is still fairly soft, and you can really treat it with well-rotted cow manure and a good dose of Gypsum. Both of these additives help improve soil structure and good soil structure aids drainage, moisture input, nutrient and air absorption. The same method is great on new and existing lawns and don't underestimate the benefits of mulching lawns and our gardens. You may well use a different form of mulch on your gardens as you do on your lawns.

Have a fantastic September,
Gail Mains Kendrick (Your Local Real Estate Agent)



Upper Plenty Merri Catchments Landcare Group

We provide support for land management issues such as weed, pest and erosion control. Also improving soil and biodiversity by providing advice, support, and grant funding.

We meet on the third Wednesday of the month at 6.30pm at "The Shack" 1240 Wallan road, Upper Plenty 3756. ALL WELCOME

See our facebook page:
Upper Plenty Merri Catchments Landcare Group
Membership enquiries

membership.upmclg@gmail.com
or Chris Cobern 0413855490



We understand that retirement means you finally get to focus on living.... *save yourself time and stress*



**Have your medication
PACKED and DELIVERED
FREE***

**CALL US ON
5787 1010**



***FOR FIRST THREE MONTHS. CONDITIONS APPLY.
PLEASE CALL OR SEE IN STORE FOR DETAILS**

LIONS CLUB OF WANDONG - WALLAN INC.

President; Daniel Rossignoli.
PO Box 225, Wandong Vic



It's spring again and we are gearing up for a new start.

Steve and Sharon are about to accost the businesses in our towns for donations for our Christmas raffle and the Christmas cakes have been ordered. I have to acknowledge all the contributors to our raffle they have all been more than generous. The mints are still about at various outlets and our grocery trolley is still active at Wandong IGA.

It has been announced that our outgoing president Daniel is moving to Queensland. Why would you want to go to Queensland after experiencing winter in Kilmore. It is hard to understand. Sam Bedi will be our next president.

I have just returned from out back Queensland and NSW. At Winton, which is famous for it's dinosaur diggings they took one look at me and yelled. "*One of them has come back to life.*" I pointed out that if they thought that I was a dinosaur they should see my friend Bill Forbes. I have a lot more hair than him and mine is not white.

Speaking of Bill he has just got the papers finalised for his new shed. At over half a million dollars this will be the Taj Mahal of sheds with gold leaf on the ceiling and hand woven oriental curtains. Us ordinary mortals will need an invitation to visit. The king has been approached to officially open it.

Do you need a handyman? I recommend Cliff. Fixing a new handle on his toilet door he managed to jam it closed. Much puffing and colourful language with the door damaged by the liberal application of hammer and chisel Steve was called to remedy the situation. The door now needs to be repaired but at least it now opens and closes.

On our recent journey we stayed a few nights at Broken Hill. We went to the palace hotel for tea, you may remember that part of the movie Priscilla queen of the desert was filmed at the palace. They asked me about Steve. This month the palace has the broken heel festival and wanted to know whether Steve was attending. He told me that he would be there if he could find his stilettos.

One last story, not strictly Lions, but concerning my sister the crabby old matron. She is sailing with my poor downtrodden brother in law Brent off the Queensland coast. At this time of year there are lots of whales. One surfaced right near the boat and Brent was reported to yell bother but I am not sure how that is spelt.

On behalf of the Lion's Club, our thoughts are with Sue Marsteller's family at the sad news of her passing.

Anyway this will do. My wife is forcing me to go to Cairns and Cape York next week so I will catch up with you after that. You have no idea how hard my life is.

Clyde Riley

Philman Excavations

House and Shed Sites, Driveways,
Horse Arenas, Retaining Walls

- ★ Excavator
- ★ Bobcat
- ★ Truck and Trailer
- ★ Float Hire

★ AUGER & ROCKBREAKER

Supply and deliver crushed rock, sand and topsoil

Phil Mansfield

0418 532 969

OH&S and fully insured



ALL TOWING

Tilt Tray Tow Truck

ANYTHING MOVED

Cars Boats Caravans

OLD CARS REMOVED FREE

Competitive Rates

GOOD OLD FASHIONED Country Service

Aaron - 0425 832 466

A & J Metal Recyclers - ABN 67103013404



Neighbourhood Watch

Let's watch out for each other

South Mitchell

How to Avoid Magpies Swooping

As spring arrives, it brings about sunny skies and warmer days. But every year at this time is also the season Victorians dread – the beginning of the magpie swooping season.

Magpies have large, pointed beaks, and use them to attack unwitting pedestrians or cyclists, with many people reporting injuries due to the ferocious nature with which these bombarding birds behave.

Some believe use cable ties pointed up and out may scare magpies away, others stick eyes to the back of their bike helmet or your head, use flashing lights, open an umbrella, or use a flag on the rear of your bike that is higher than your head.

Magpies are smart, extremely territorial and will swoop riders from up to 100m away from their nest. They see people who ride or walk as a threat to their young.

In order to stay a little safer, we recommend that you:

- Know the swooping areas – check out the Magpie map;
- If you do find yourself in a swooping area, dismount your bike if riding, and walk calmly and quickly through the magpie's territory;
- Wear glasses or sunglasses to keep your eyes safe; and
- Ride in a group.

If you do get attacked, don't freak out and run, and don't wave your arms around or yell! Quickly and calmly move out of their space. It is illegal to harass or harm native birds and other wildlife without authorisation.

Sightings of magpie swooping can be reported on the Magpie map on <https://www.wildlife.vic.gov.au/managing-wildlife/swooping-birds>.



Upcoming Events

NHW Recruitment Day – Kilmore

We are all aware of the increase of crime in our towns and the city and Neighbourhood Watch can help prevent crime in your neighbourhood. We are holding this recruitment day to gather ideas of what we can do for your community and to welcome new volunteers in our group. Come see us at Kilmore Coles on Saturday 14 September, 2024, between 8am – 2pm, to find out how you can help prevent crime in your neighbourhood. Personal alarms and UV Pens are available for purchase.

General Meetings, 12 September, 2024, 7pm

Our next General Meeting will be held the newly renovated meeting room, Community Centre, L.B. Davern Reserve, Dry Creek Cres., Wandong. Everyone is welcome.

Hotlines:

000

Emergency

131 444

Police Assistance Line

1800 333 000

Crime Stoppers

Online Reporting: <https://www.police.vic.gov.au/palolr>

For more information visit:

<https://sites.google.com/view/south-mitchell-nhw/home>



www.facebook.com/southmitchell.nhw.inc

email: newsletters.smnhw@gmail.com



Stop kidding yourself. If you drink, don't drive.

Thinking about driving after a couple of drinks? Think again.
If you blow .05 or over, you could face serious penalties,
including fines, losing your licence, getting an interlock installed
in your car and having to blow zero for three years.



COME TO BEAR'S CASTLE!

**NEXT TOURS: SATURDAY 26TH OCTOBER
2024**

**Bus tours are conducted biannually during
Autumn & Spring through the Whittlesea Courthouse
Association**

**ENQUIRIES: JOAN TERRELL 0412 907 937
pte40164@bigpond.net.au**

**Bookings essential (limited seats available)
Tours leave the Courthouse at 10.00 am & 2.00 pm sharp**

**COST \$40.00 adults \$25 kids- refreshments included. (2 - 2 ½ hour, tours)
Tours unsuitable for children under the age of 10 years**

**See inside the historical site & visit the
Yan Yean Reserve's, historical 'Caretaker's Cottage'**

Bear's Castle, Yan Yean:



TIM CURMI

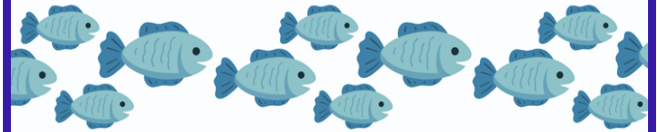
PRESIDENT OF NATIVE FISH AUSTRALIA

Join UPMCLG in welcoming Tim Curmi, a passionate freshwater ecologist, to speak about the native fish of **Plenty River** and the **Merri Creek Catchments**. Also the history of fish stocking in the Plenty River.

With a special interest in the ecology and restoration of endangered native fish populations, and empowering the community to promote and improve native fish and river health - **it's sure to be a great time!**

The presentation will start straight after the UPMCLG monthly meeting until 8.30pm.

Supper supplied



WEDNESDAY 18 SEPTEMBER 2024: 7 - 8:30PM
THE SHACK, UPPER PLENTY

For more info: secretary.upmclg@gmail.com



2024 Classes & Activities from 15th July 2024

Masks Strongly Recommended – COVID-19 Rules Subject to Change.

All activities to be held at **Wallan Neighbourhood House (WNH)** unless otherwise indicated.

New Classes and Activities will be published as they become available – Register for new classes at U3A Wallan office

Class	Time	When	Location
Card Craft - Marleen	1-2.30pm	Mondays <i>Except 1st Mon Monthly</i>	Private Venue
Card Craft - Carole	10-12pm	1 st & 3 rd Friday Monthly	WNH
Computers	From 10am – 11am	Wednesday Monthly <i>Resume to be advised</i>	WNH
Dancing	1-3pm	Tuesdays Weekly	WNH
Fun Cooking Class	10-12pm	3 rd Friday Monthly	WNH
Guitar Lesson	12.15-1.15pm	Thursdays Weekly	WNH
Italian	10.30-12pm	Thurs weekly <i>Except School Holidays</i>	WNH
Luncheon Club	12pm	Last Fridays Monthly - Carpool from WNH 2024 Luncheons TBC	Held at Venue
Mah-Jong	10-12pm	Tuesdays Weekly	WNH
Pilates	9.30-10.30am 1.30-2.30 pm	Mondays weekly Thurs weekly	WNH
Tai Chi	9.30-10.30am	Wed Weekly	WNH
Trivia with John	1pm-3pm	Fridays Monthly <i>2024 Next Trivia to be confirmed</i>	WNH
Walking	9.30am	Fridays Weekly – <i>Contact Secretary if you wish to walk</i>	WNH meet top of stairs
Write for Life	12.30-2.30pm	Wednesday Monthly <i>Resumes to Be Advised - Except school holidays</i>	WNH
Water Aerobics	1.00pm 10.00am	Mon / Wed Fridays	Cost: Casual \$15 10 classes \$110 HIDDEN VALLEY

NEW MEMBERS ARE ALWAYS WELCOME, NEW VOLUNTEERS TO JOIN THE COMMITTEE ARE VERY WELCOME!

U3A Wallan Inc
Phone Secretary 0438 107 300
Course Co-Ordinator - Wendy B

Timetable / Sessions 2024

General Enquiries/Enrolments: secretary@u3awallan.org.au

UPPER PLENTY MERRI CATCHMENTS LANDCARE GROUP



WATERWATCH FIELD DAY

JOIN US AT A FAMILY ACTIVITY DAY TO COLLECT AND IDENTIFY WATERBUGS TO EVALUATE THE HEALTH OF OUR LOCAL WATERWAYS.

LED BY TREVOR HAUSLER FROM FRIENDS OF MERRI CREEK THIS WILL BE A FUN AND EDUCATIONAL ACTIVITY.

SUNDAY 22 SEPTEMBER - 10:30AM - 1:30PM

UPPER PLENTY - REGISTER FOR FULL ADDRESS

REGISTER FREE HERE: [HTTPS://EVENTS.HUMANITIX.COM/WATERWATCH-FIELD-DAY](https://events.humanitix.com/waterwatch-field-day)

ENCLOSED SHOES + MODERATE FITNESS REQUIRED TO REACH THE CREEK
EQUIPMENT + LUNCH PROVIDED



FOR MORE INFO: SECRETARY.UPMCLG@GMAIL.COM

CLONBINANE C.F.A.



Last month Clonbinane CFA celebrated and recognised the contributions that our members (and families) make in protecting our community. Several service awards were presented by Commander Charlie Cleary from District 12 on behalf of the CFA.

5 Year Certificate

Henry Laurie

10 Year Medal

Glenda Farnay, Jack Galbraith, Shane Markey

15 Year Medal

Tom Snaith, Rachel Woods, Craig Zundovskis

20 Year Medal

Luke Vienet

25 Year Medal

Stephen Farnay, Les Geraghty, Leslie Grass

30 Year Medal

Thomas Finnigan

35 Year Medal

Peter Grass, Mark O'Doherty

40 Year Medal

Robert Simpson, Lew Soulsby

45 Year Medal

Mark Jones

50 Year Medal

Lyn Searle



Pictured above – Brigade Life Members (L-R Tom Snaith (Captain), Lew Soulsby, Sharon Hibbert & Stephen Farnay)

We learnt some incredible things last night including how Lyn became the first female CFA volunteer in our district (region at the time). In order for Lyn to join Strath Creek CFA she was required to be nominated by the captain and one other, the nomination had to be taken to a brigade meeting before being approved by the Region Officer and Head Office in Melbourne. At the time women weren't permitted on the trucks but since then Lyn has volunteered in many roles including that of truck driver.

As a part of our awards night, we also presented some significant awards.

Brigade and CFA Life Memberships, along with finally handing over some National Emergency Medals (presented last year however recipient was not able to attend ceremony).

National Emergency Medal (2009 and 2019/2020 fires)

Thomas Finnigan

Brigade Life Members

Stephen Farnay, Sharon Hibbert, Lew Soulsby

Ross Hibbert, Mark Kohler, Tony Scicluna

Congratulations and thank you to all members for your contribution to our brigade and community.

Special thanks to JBL Catering for providing us with a delicious meal and of course to our colleagues from Wandong CFA who made themselves available to attend just in case the pager decided to go off in the middle of the presentation.



Pictured right– CFA Life Members (L-R Commander Charlie Cleary (District 12), Tony Scicluna, Mark Kohler, Ross Hibbert & Tom Snaith)

Lauren Kathage MP

Labor Member for Yan Yean

For help with State Government issues such as housing, roads, transport or education, please phone my office on **9432 9782**.



 3/14 Yan Yean Rd, Diamond Creek VIC 3089

 lauren.kathage@parliament.vic.gov.au  03 9432 9782

www.mousedetailing.com

MOUSE DETAILING

Mobile Car Detailing Services



Call Karen
0412 489 033

Expos Available

HE'S HERE FOR US

Rob Mitchell MP
Member for McEwen

Rob.Mitchell.MP@aph.gov.au | 03 5716 3000

Authorised by R Mitchell ALP, 57-59 High St, Wallan.



WALLAN EQUIPMENT HIRE




PRETTY SALLY MITRE 10

WE HAVE ALL YOUR HIRE AND LANDSCAPING NEEDS!
96 HIGH STREET, WALLAN, VIC, 3756 PH: (03) 5783 2800

Wandong Primary School



Foundation 2025

We continue to have unprecedented enrolments and this year we have had to enact a very strict Enrolment Policy, sadly having to decline a significant number of families wanting to enrol for 2025. We currently have a confirmed Foundation enrolment of 70. Same time last year we accepted 90. In 2021 = 79, 2020 = 47, 2019 = 54, 2018 = 64, 2017 = 38, 2016 = 43, 2015 = 40.

We continue to be blown away by the feedback we are receiving about our Launchpad Learning sessions. It is absolutely heartwarming, a personal dream come true, seeing our families engaging and starting the education journey with us early. It is a wonderful partnership that will positively impact our students as they start and continue their schooling

Book week celebration!

We had the most incredible book week celebration, starting with an open morning show casing students writing followed by a parade! Well done to all students involved we had a blast!



Mini Olympics at LB Davern!

Students dressed in their house colours and participated in a Mini Olympics! It was an incredible day with our students showing wonderful sportsmanship and support!



KEY DATES

- Friday 13th - Working Bee - FA, 1/2G, 5/6E 2.30pm- 3.30pm Parents welcome
- Friday 20th - FOOTY COLOURS DAY - Wear your footy colours today, all codes allowed, AFL, NRL, Soccer, Local leagues
- Friday 20th - Last Day Term 3
- Saturday 21st - World Gratitude Day



THANK YOU SUE MARSTAELLER - WHAT A REMARKABLE LIFE

MEDAL (OAM) OF THE ORDER OF AUSTRALIA IN THE GENERAL DIVISION = Australia Day 2017
Governor of Victoria (2017) Linda Dessau

Mrs Susan Louise MARSTAELLER, Heathcote Junction Vic 3758

For service to local government, and to the community of the Mitchell Shire. Service includes:

Mitchell Shire Council: Mayor, 2011, 2004 and 2015/2016.

Councillor, since 2003.

Deputy Mayor, 2009.

Council Representative on Committees of Council including:

Member of Kilmore Wallan Bypass Community Consultative Committee 2012 – 2014

Cultural Diversity Committee 2014 - 2016

Youth Strategy Committee 2014 - 2016

Early Years Policy Development Committee 2011 - 2016

Interface Councils Representative 2003 - 2016

Municipal Fire Prevention Committee Chair 2011 - 2016

Municipal Integrated Fire Management Committee Chair 2003 - 2008

Municipal Emergency Management Planning Committee - Chair 2008 - 2016

MFAC rep on MEMPC 2005 - 2008

Mitchell Tourism Development Committees 2003 - 2012

Keep Australia Beautiful Committees 2003 - 2008

Australia Day Awards Committee 2003 - 2008

Community Grants Committee 2005 - 2008

Community Donations Committee 2004 - 2009

Mitchell Tourism Development Group 2005 - 2008

Mitchell Arts Advisory Committee 2004 - 2016

Mitchell Shire Access & Inclusion Committee - Chair 2003—2008

Recreation Committee incorporated into A & I Committee,

Finance & Audit Committees 2003—2005, 2010-2011 and 2012—2015

North East Local Learning & Employment Network

Mitchell Shire rep on the Merri Creek Co-ordinating Committee

Municipal Association of Victoria Representative 2011-2012, 2015-2016.

2004—2005 and 2011—2012

North East Local Government Network Representative 2003—2005

Mitchell Shire Timber Towns Representative,

Mitchell Shire CEO Performance Review Committee,

Mitchell Shire Governance Committee, Mitchell Business Forum

2003—2005 Best Value Committees- Business Services & Parks & Gardens

2003—2005 Customer Service Working Group

2003 - 2015 International Women's Day Committee

2000 - 2003 Wandong Heathcote Junction Development Committee

Since 2003 Representative of Council on a number of local Section 86 committees:

2003 - 2016 Wandong Hall Committee

1999 - 2016 L B Davern Reserve Committee

2003—2005 Clonbinane Recreation Reserve Committees

2005—2008 Wallan Multi Use Centre Committees

2007 - 2008 Representative to the Mitchell Neighbourhood Watch Cluster

2012—2016 Mitchell Shire CEO Performance Review Committee

Australian Local Government Women's Association:

Member, since 2003.

State Secretary, 2006-2009.

Founding Member, North Eastern Local Government Women's Group, since 2006.

Wandong Rural Fire Brigade:

Treasurer, 1996-2024.

4th Lieutenant, 1999-2001.

Firefighter, 1996- 2004.

Member, Fundraising Committee, 1999-2004.

Community Education Officer, 2002-2006.

Member, since 1995.

Country Women's Association of Victoria:

South Morang Night Owls Branch:

Founding Member, since 2014.

Mernda Branch:

Craft Leader, 2005-2024.

President, 'for 6 years'.

Vice-President, 'for 7 years'.

Founding Member, 1982-2024.



Chair, Wallan and District Community Branch, Bendigo Bank, NorCen Financial Service Ltd, 2013-2016 and Director, since 2005.

Director, Central Ranges Local Learning and Employment Network, since 2015.

Treasurer and Member, Committee of Management for LB Davern Reserve, Wandong Heathcote Junction Sports and Community Centre, since 1999.

Member, Wandong Heathcote Junction Community Group, 2002-2024.

Justice of the Peace and Member, Royal Victorian Association of Honorary Justices, since 2003.

Treasurer, Wandong Country Music Festival Committee, 1999-2010.

Member, Community Representation Committee, Goulburn Valley Water Board, 2008-2010.

Member, Mt Disappointment Community Representation Group, Department Sustainability and Environment, 2008-2009.

Area Co-ordinator, Wandong Heathcote Junction Neighbourhood Watch, 2002-2009.

Representative, Kilmore Police and Citizens Consultative Committee, 2004-2009.

Member, Wandong Heathcote Junction Sewerage Liaison Committee, 1998-2000.

Editor, Wandong Heathcote Junction 'What's News', 'for 10 years'.

Awards Received

International Year of the Volunteer Award from Mitchell Shire 2001

Australia Day Award from Mitchell Shire Council in 1999

Centenary Medal from the Federal Government in 2004

Participant in the Commonwealth Games Queens Baton Relay 2006

Member of the Victorian Local Government Association Mayoral Chain since 2006

National Emergency Medal – 2014

CFA service Awards 15 years 2010 20 years - 2015

MAV 10 year Councillor Service Award 2013

MAV Mayor Emeritus Award – 2016 (3 terms as Mayor)

New Sports Pavilion building in Wandong at L B Davern Reserve named “Sue Marstaeller Sports Pavilion”

Who's Who of Australian Women publication 2008

Who's Who of Australian Women publication 2012

Order of Australia Medal OAM Jan 2017





Introducing the online Community Impact Hub.

Apply online for your next community Grant or Sponsorship

Find all you need to know about applying for a Grant or Sponsorship on the Community Impact Hub.

norcenfs.smartygrants.com.au

**Next round closes
March 29**

Wallan Community Bank - 5783 2422
Kilmore Community Bank - 5781 0066
Broadford Community Bank - 5454 1233

B Bendigo Bank

Community Bank
Wallan, Kilmore and Broadford



**Independent
Manufacturer**

Kilmore Industrial
Estate,
123 Northern Hwy,
Kilmore, 3764

(03) 57 822 300

www.shedcity.com.au
sales@shedcity.com.au



Farm sheds, Machinery sheds,
Barns, Garages, Carports,
Garden Sheds,
Paddock shelters,
Stables, Aviaries.



For all your Steel
Roofing, guttering,
Wall Cladding,
flashing needs
made right here in
Kilmore.



MODERNISE YOUR KITCHEN OR BATHROOM...

*without the
hassle and
expense of
replacing!*

Superior Resurfacing,

the resurfacing
specialists, can
makeover your
kitchen or
bathroom surfaces
to look bright and
fresh again using
our exclusive
polyglass product.



BEFORE! ↔ **AFTER!**



BEFORE! ↔ **AFTER!**

**You could save up to 70% on
replacement and renovation costs!**



THE RESURFACING
Specialists

CALL NOW!

0407 421 292

Email: info@superiorresurfacing.com.au



For more information visit our website
www.superiorresurfacing.com.au



Our Town's Football Club

The Warriors have finished the year with one of the most successful seasons in recent history. With two teams vying for the premiership in the grand final last weekend. Unfortunately, the under 14s were defeated by Broadford in a tough game. They had a fantastic season, it was just not their day. The under 12s however, came out firing from the first bounce and never looked back. They defeated Alexandra convincingly and held the premiership shield at end of the day.

Congratulations to
The Wandong
Warriors U12s
Premiers 2024



Calling all U16s
The WARRIORS want
YOU!

If you are born between 1/1/09 and 31/12/10 you qualify to play U16s football. Contact the club for more details. Come and join the Warriors in season 2025.

Presentation Day and Annual General meeting Sunday September 8th 10.30am LB Davern Reserve Wandong

For all up-to-date news please follow us on Facebook

 Wandong Junior Football Club

We would like to thank our round sponsors; without their generosity our club would not exist.

WANDONG-HEATHCOTE JUNCTION COMMUNITY GROUP

P.O. Box 242, WANDONG 3758 Tel: 0413 832 411



WEBSITE: In August the <www.wandong.vic.au> website received 1213 visits. If any business or group has noticed any change which needs to be corrected to their entry, please let us know. To add your business or group email: whatsnewswhj@gmail.com.au

ARTC AND THE WANDONG BRIDGE

For the last four years we have been hearing about this huge bridge that ARTC have been proposing to build over the rail lines at the northern end of Rail Street.

Well last week we saw the first real evidence that it is really going to happen. Until now it has been a lot of talk and some rough drawings of this structure. But last Monday we had Rail Street closed off for a time as the workers set up water jet drills to find where all of the underground services are. This being done and all the pipes and wire found and marked, they brought in the heavy equipment, drilling rigs to take soil samples from as far down as 15 metres below ground level to ensure that the lower strata's of rock are suitable for what they will need to do to build this bridge and all of its extra roadworks.

While they were careful not to be active around school drop off times, the amount of chaos they caused was quite astounding with stop/go people everywhere and some holdups to traffic in both areas of the work site, being Rail Street and the Broadford Road.

I was speaking to one of the supervisors, who stated very clearly "that we better get used to it" that the job will take up to two years to complete, and that they were planning to start in earnest by February next year, even though we have also been told that we will not see the final plan until next year. WHAT !!!! And once they start, they will not be gone by school drop off time so the whole of Rail Street will be affected as traffic will at times be sent up to Heathcote Junction level crossing as Rail Street is raised and the new bridge is built.

As the man said we all **BETTER GET USED TO IT**, because it is happening very soon.

DAVID MORAN (PRESIDENT)



>>> SEASON 2024

Our Winter comp has now officially come to a close.

WANDONG NETBALL CLUB



Congratulations to all players for competing in the KBNA Winter Competition.

We hope that all players feel that they have accomplished something new and can see the growth that their Coaches have seen this season.

The players have been incredible all season. We could not be prouder of the way they showed true sportsmanship throughout the season, played with integrity and courage and did it all with a smile.

>>> FINALS CAMPAIGN

Our Under 9s team participated in the KBNA Round Robin. Unfortunately the weather had other plans and the day was cut short after being called due to heavy rain. Our U9s team were unphased dancing in the rain and making the best of their last game as our 2024 9&Under Green team.

13&Under White made it to the first final sadly going down by 2 points in the 4th quarter, after leading the match.

15&Under White also made the first final and played a strong first half. They lead the 1st, drew in the second but Broadford ran away in the last half to win the match 39 to 30.

Well done on making it to the final 4 this year.

END OF SEASON PARTY & PRESENTATION



More details to come....



WANDONG SELF STORAGE

We would like to express our gratitude to Wandong Self Storage for their continued sponsorship.

This essential support plays a significant role in the success of our teams and the entire club.

We'd like to acknowledge Bec & Jason, the dedicated individuals behind Wandong Self Storage, and give a special shout-out to Isabelle, an enthusiastic player at the club, and Lincoln who is always helping out.

Our heartfelt thanks to Wandong Self Storage for backing our young athletes and helping to foster the development and progress of Wandong Netball Club.



We would like to recognise the generosity DG Earthworks.

Dan Louis is a returning sponsor this year whose daughter Scarlett plays in our U15 team. Dan owns and operates DG Earthworks – a local Wandong company with expertise in Hydro excavation, Service Locating & Installation of underground Power, water, gas, Telstra / NBN / Optus, Excavations, Drilling and Civil Construction.

Thank you once again Dan for your continued support of the Wandong Netball Club.

Call Dan on 0409 529 730

>>> CRAIGIEBURN INDOOR COMP

We are excited to announce that we have entered teams into the Craigieburn Indoor Netball Comp. Congratulations to the Under 9 Comets and the Under 13's Stars who are our involved in making history for the Club by playing in this comp.

Both teams have started off strongly defeating their opponents while navigating how it feels to play on a completely different surface. We look forward to your continued success and to entering more teams in the competition in the coming years.

>>> KILMORE SPRING COMPETITION

We are once again entering teams into the Kilmore Spring Netball Competition. If you have a child wanting to play please contact us via email: wandongnetball@gmail.com. This comp has no finals and is just for fun.

>>> TYPO APOLOGY

In the last issue of Whats News we have accidentally published the incorrect contact number for the **Brunswick Family Dental Services**. Our apologies, the correct number is **03 9386 7225**



The L.B.Davern Reserve is open to all our community, so please come down and enjoy this great facility, join the various clubs, just walk through along the Say G-Day trail, take the kids down to play on the play equipment or just play and exercise on the oval.

We are now in spring with wild winds to continue and cold wet conditions still to continue be cautious of the wet trails and debris from the trees throughout the reserve and be aware the creek can flood at any time. Don't let this weather stop you from coming down to the Reserve to enjoy on what there is to offer.

Our Winter User Groups are at the end of their seasons programs and heading into the business end of presentations of a challenging 2024. Congratulations to those teams that have brought home a Grand final Cup or have reached the Finals-you have done your club and community proud.

The summer user groups are in planning mode and ready to commence their prospective season.

Mitchell Agility Dog Club., Junior Tennis /Saturday Afternoon Tennis, Night Tennis, Standardbred Riding Club., Kilmore and District Adult Rider's Club, Cricket, School Sports

It is good to see the Reserve full of life with our community supporting their groups and other activities enjoyed by those who participate.

Walking the dogs, kids in the playground, individuals/groups doing their fitness workouts, mums with the kids in the pram, riding bikes, playing football-Kick to kick and Goal shooting practice, passing shots in netball, shooting hoops at the basketball ring, riding the horses, training dogs to behave, Wandong primary doing their sporting activities on the Oval, Wallan basketball in the Stadium

Continued developments at the Reserve will complement our sport groups and community. We are very lucky to have a Reserve that has character and bush ambiance that complements our communities.

L.B.Davern Reserve Projects update:

Project 1:Redevelopment of the Community centre.

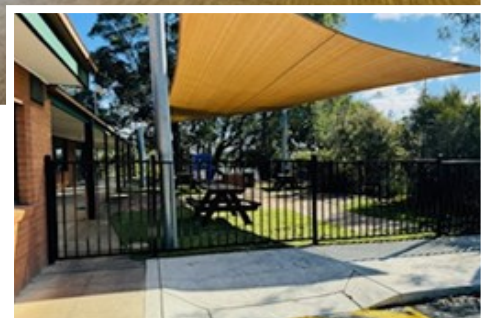
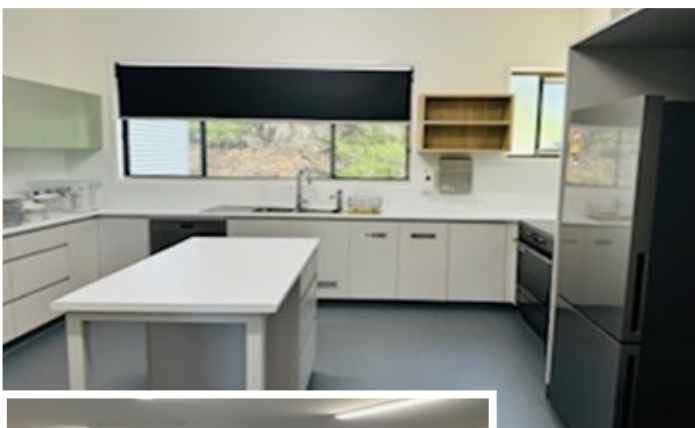
Wandong Community Centre Revitalisation: In progress

Current updates at this point

Revitalise the centre to contemporary standards by reconfiguring and upgrading the internal floor plan, which will create a versatile, multi-purpose centre for shared community use. This project is an \$800.000+ project. The Redevelopment of the Community centre at the Reserve is now complete with some minor IT works to be completed. We are open for business

The Reserve committee will resume bookings for the centre late September-2024.

Wandong Junior Football Club and Wandong Netball Clubs are booked in for their Presentations at the Community Centre.



**CONTINUED
PAGE 23**

**CONTINUED
FROM PAGE 22**



In Memory: Sue Marstaeller OAM JP

It is with sadness that we have lost a dedicated community member a shock to all of us here at L.B.Davern Reserve Committee of Management. Sue was a part of our committee as a Committee Member, Treasurer-1999 to present and past as a Mitchell Shire Council representative 2003 to 2016.

Over 26 years of dedicated service to L.B.Davern Reserve.

Sue accomplished so much and touched the hearts of everyone, she was a steward in unwavering strength and determination. Condolence to Sue's Family

Project 2: Shade Structure @ Courts 5 & 6 and 3 & 4

The L.B.Davern Reserve was successful in the Tidy Towns Fund Grant for the purpose of providing Shelter at Courts 5 & 6. This shelter is double sided and will also provide seating and shelter for courts 3 & 4.

This project was successful through the support of the combination of L.B.Davern Committee, Wandong Netball Club and Wandong Tennis Club. **RIGHT: Sample design of Shelter**

Our Community building is a great asset to hold Kids parties, family type events and private functions of all sorts. Please consider when planning a function. You can contact our booking officer Darlene Gunter on 0418 312 762.

For all L.B.Davern Reserve Bookings to either:

- **Oval Bookings, Stadium bookings and enquiries :**
 - Mitchell Shire Council Recreation and Open Space unit ph. 5734 6200.
- **Community Centre and Sports Pavilion contact:**
 - Darlene Gunter Booking Officer for the WHJSCC on 0418 312 762



Our community, we need your help; We need to catch any persons vandalizing our Reserve!!!!

If Residents notice anything out of the ordinary please contact the police on 000

It is in our community interest that we all keep our Reserve safe for all to use!!

If anybody in our community would like to share any photos of History of L.B Davern Reserve for us to share on what's News please send to kooraw@bigpond.com



**We are Open for Business
at the Community Centre
Book Now**

**Rob Telfer, President, Davern Reserve Committee
12 Dry Creek Crescent, (P.O.Box 303) Wandong 3758
Mobile 0408 393 250**

SUDOKU

Answers on page 26

Place the numbers 1-9 only once in each row, column & 3x3 block

			1					
5		2						
	6			9			8	5
3				1	4	5		
		6	2		8		7	
					6			7
						6		2
	9	5	4			1		

THIS MONTHS QUIZ

Answer appears on Page 26 but no cheating!

What river passes through:

1. Brisbane
2. Sydney
3. Melbourne
4. Hobart
5. Adelaide
6. Perth
7. Darwin
8. Alice Springs

In what State is the town of:

9. Strahan
10. Carnarvon
11. Rainbow
12. Goondiwindi
13. Quorn
14. Tennant Creek
15. Gilgandra
16. Which State borders all other mainland States?

Kilmore/Wallan RSL Sub Branch

meets the last Thursday night of the month and open every Wednesday 10am -12pm at Kilmore Memorial Hall

Contact Rod Dally 0417 522 835

We have Pension and Welfare Officers to help veterans in the area.

MITCHELL SHIRE COUNCIL



How to keep up to date with Council online:

- > E-News direct to your inbox, sign up now
- > On our website www.mitchellshire.vic.gov.au

Not online?

- > Fortnightly Council Ad in the local newspaper
- > Monthly radio shows

Or, contact Mitchell Shire Council on 5734 6200.

Justice of the Peace for Victoria

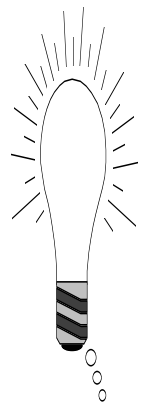
Sue Marstaeller

Mobile: 0438 871 520

*Sue is available to sign documents.
Phone for appointment.*

ROB & LEONIE FERRIS

**ELECTRICAL CONTRACTORS
REC 3028**



- *Light & power points
- *Security systems
- *Underground Mains
- *Stove & hot water repairs
- *New houses & rewires
- *Safety switches & smoke detectors
- *Commercial & Industrial
- *Austel Licensed phone points

**Phone 5782 1746
Mobile 0418 323 838**



PO Box 550, Kilmore 3764
President: Elaine De Gabrielle
Secretary: Mark Perrott
Contact: info@u3akilmoreanddistrict.com.au

Apart from those of our members who are away travelling and seeking warmer climates, the cold and wet weather we are having hasn't deterred people from enjoying classes to the full. The new facility is certainly helping; the heating is efficient and it is easy to get a cuppa as the kitchen is well appointed. The space suits our needs perfectly.

The lunch club continues to be extremely popular and it pays to book early as places fill very quickly. Our convenors do a great job of organising venues and coordinating transport. They put in a lot of work and it is greatly appreciated by the members, who enjoy catching up and eating out. Check the website for further information.

The bowls group numbers remain very strong and they have a lot of fun playing and socialising. They meet each Wednesday afternoon and set up in the large space in the JJ Clancy community hub. The session ends with a cup of tea.

There is an Online Safety Workshop for members to be held at the JJ Clancy Facility at 10am on Thursday September 5th. It will be presented by Timothy from TJ's Computer Repairs and it is recommended that you bring something to take notes.

The Recorder Group have been invited to participate in this year's Kilmore Celtic Festival to be held in September over the weekend 20th to 22nd. Playing under their performing name "Kandis" it is always a pleasure and good experience to be able to play to an audience. Later in the year there will be a recital, no dates as yet, it will be nearer Christmas and we will keep members informed via the Newsletter.

The gardening group had so much fun at last month's photographic presentation that they have decided to do it again. There were too many photos from the past to enjoy them all in one session and they include some amazing gardens.

U3A is open to people over 50 who are no longer working full time and is a fun and cost effective way to learn new skills, to meet like-minded people and to socialise. We are a friendly and approachable bunch and if you already belong to another U3A branch, you can join as an associate member for only \$5.00.

Check website <https://u3akilmoreanddistrict.com.au/> or contact info@u3akilmoreanddistrict.com.au

Cheers, Amanda Oades

Hello Readers, In this edition I would like to give you some further information on the following Wallan U3A activities.

Pilates classes are conducted on a twice weekly basis, every Monday at 9.30am and Thursday at 1.30pm.

Each session goes for 60 minutes and our instructor, Tatiana, uses her many years of experience to ensure participants get the most benefit for both their mental and physical well-being. To achieve this we use a combination of floor mats, fit balls, therabands, relexology balls and light weights (dumbbells) in our various exercises, stretches and balancing routines. Come in for a tryout as the first class is free.

Another activity which is good for the mind and body is ballroom dancing. Classes are conducted every week, on Tuesdays between 1 and 3pm in the Seniors Hall at the Wallan Neighbourhood House. Our dancing teacher Theo, along with his assistant Brigette have many years of experience, a number of them at the Fred Astaire Dancing Academy. All styles of dancing are taught, including rumba, foxtrot, waltz, swing, tango and many more. Beginners are most welcome, their first session is free.

To encourage more men to attend our ballroom dancing classes, we currently have almost twice the number of women, we offer a discounted fee of 50% for the first five classes.

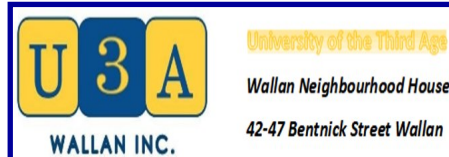
We put all our dancing prowess that we have learnt into practice at the Casa D'Bruzzo Club in Epping on the last Wednesday of each month. The dances start at 6.30pm and include a 3 course meal and live bands. Usually, we have at least 2 tables of 10 people attending, Theo is a member of the club.

This month we are going on a guided tour of the Royal Exhibition Building in the city, this includes access to it's Dome which provides a 360 degree view of many of Melbourne's gardens and surrounding buildings of the Melbourne City and Carlton areas. We usually go on these tours on a bi-monthly basis.

For another social activity, we go to a local area cafe or hotel for lunch usually on the last Friday of the month, and we provide transport for members, via car pools from the Wallan Neighbourhood House.

If you need further details on any of our Wallan U3A activities visit our website, <https://u3awallan.org.au> or give me a call on 0413 083 089

Looking forward to seeing you, John Lanphier - President



All Weather Training Facility - Heathcote Jct
(Established 1995)

Puppy School - Social Classes
Adult Classes - Trick Training
Behaviour Problems



Workshops
Dog Park Etiquette
Intro to Agility
Dock Diving
Cross Country

Alfoxton Dog Centre

www.foxton.com.au

*Boarding Dogs / Cats -short and long term Farm Stays.
Dogs have large indoor/outdoor pens. Also big play paddocks
where your dog has room to get out and burn off their energy.*

*Cats and little Dogs get to hang out in fully enclosed and heated
Mud Brick Cattery*

Phone: Anne **0402 118929**

60 Junction Rd, Heathcote Junction, Vic

Alfoxton is a registered Domestic Animal Business - Mitchell Shire

**Weather Report -
Heathcote Junction/Wandong**

AUGUST 2024

**Winter is on its way out,
thank goodness!**

**It was a month to remember. There
was rain, hail, sleet and very strong
winds causing damage throughout the
state. And it was cold – above ground
water sources were frozen causing
inconvenience if nothing else.**

**Rainfall was light with rain falling
on 10 days of the month and sunny
days were rare.**

Stats - Rainfall

August 2024	-	34 mls
Previous year	-	31 mls
Average prev 10 years	-	79 mls
Total this year	-	549 mls
Total prev year	-	432 mls

MAKE A DIFFERENCE - BECOME A VOLUNTEER

If you are young, elderly, retired or working, please consider joining a community group and enjoy the rewards of volunteering. Join one of the community groups operating in Wandong Heathcote Junction.

Wandong Heathcote Junction Community Group Inc: Call 0413 832 411

Wandong Wallan Lions Club: Call 0418 142 172

Wandong History Group: Call 0432 120 736

QUIZ ANSWERS (from page 24)

1. Brisbane
2. Parramatta
3. Yarra
4. Derwent
5. Torrens
6. Swan
7. Blackmore
8. Todd
9. Tasmania
10. West Australia
11. Victoria
12. Queensland
13. South Australia
14. Northern Territory
15. New South Wales
16. South Australia

**SUKODU
solution**

7	8	9	1	4	5	2	6	3
5	4	2	8	6	3	7	9	1
1	6	3	7	9	2	4	8	5
3	7	8	6	1	4	5	2	9
9	1	6	2	5	8	3	7	4
2	5	4	3	7	9	8	1	6
8	2	1	5	3	6	9	4	7
4	3	7	9	8	1	6	5	2
6	9	5	4	2	7	1	3	8

Negotiating the Dog Park ...

In November last year I wrote about how Mitchell Shire is to ban dogs off-leash except in designated dog parks... (Still waiting to see a release for the designated areas) So now a follow up talk about some of the issues we will see in future once the dog park becomes your only option. Note: When you talk to Trainers and Clubs, they usually tell you to avoid these parks like the plague. Partly because this is where often there are fights, both between dogs and humans.

Here are a few points to consider before using a Dog Park.

What is the aim for taking your dog to the park? - With smaller backyards, this means dogs often don't have the chance to burn off their energy. Pent up energy creates stress for dogs, hence we see many dogs who are constantly worried about new things and become reactive when walking on leash around the community.

How will your dog cope in the environment of the park? -

Consider how your dog behaves under normal circumstances. If you don't achieve boundaries and reasonable control around the house and just walking in the street, then you will NEVER achieve any acceptable control under the distractions of a public park.

Does your dog mix well with other dogs? - If the main objective of dog parks is to provide your dog with the mental and physical exercise for them to be happy and healthy. Then this is achieved by running and playing with other dogs - BUT your dog needs to feel comfortable mixing with the many different personalities of dogs.

Obedience Does Not Work - Teaching dogs to *SIT, DROP, STAY etc* will not help when you are in a park environment. Owners/dogs may not follow the same program as you. Hence the cultural differences between dogs can easily become apparent and we end up in a race riot. *Your nervous Border Collie may not cope with an enthusiastic Labrador who wants to play. The spoilt 'oodle' feels threatened by a large clumsy hound dog.*

Equipment is Useless - Having a harness that states your dogs 'emotions' like *nervous* or *reactive* doesn't help in a dog park because **DOG'S CAN'T READ...** Should you feel your dog is too emotional then you should not be in an off-leash area. Once you both learn the skills to become more resilient at home - then go public.

Dog Park Etiquette ... Once you feel ready for a dog park you need guidelines to make this a success.

1. **Don't Rush In** - When you first get to the park, let your dog wander around the fence on the outside. Chances are other dogs will come to the fence and sniff your dog. This gives you a chance to see what dogs/people are there and also perhaps get to see IF the energy in the park might suit. Then enter the Airlock and WAIT. The inside dogs will inspect your dog and your dog likewise - once dogs relax some will run off to do other things. Then undo your lead and open the gate for your dog to enter park. If your dog is worried or reactive, Don't Enter..... *duhhh !!*
2. **Don't Play Fetch** - Although fetch is a great game to burn off a dogs energy it can become a big problem in the off-leash park (*mainly when other dogs are present*). If your dog is ball obsessed they can become possessive if another dog gets to the ball first. Even IF your dog gets the ball there may be another dog who is equally obsessed and an argument can ensue. Either way the ball throwing may induce bad energy.
3. **Don't Take Food** - Either for humans or for dogs. Food for many dogs will create a fight response, so out of respect for everyone in the dog park - leave the food at home or in the car.
4. **Don't Take Prams/Pushers/Young Kids** - Off-leash environment is for dogs to explore and dogs want to stick their noses into objects that are on their level. Other peoples dogs may NOT be used to babies/kids but they might find that the noises and smells are overwhelming their good manners. Remember a dog park is for DOGS.... Dogs aren't allowed in kids playgrounds so kids should not be in dog parks.
5. **Don't Stay Still** - Dog parks should not really have seating, otherwise people get in there and sit down. The best thing to do is start walking, this helps to keep dogs moving and not congregating at the entry plus the dog is enjoying their mum/dad exploring with them.



Don't use your bloody phone at the park - you are responsible for your dogs behaviour.

Supervise your dog - Don't get on social media.

By Anne Zelvys IACP-CDT (@ Original property not to be re-

Whittlesea Community Network

92a Church Street Whittlesea 3757
Ph: 03 9716 3361 Fax: 03 9716 3816
Email wchi@whittleseach.com.au



Hello! Is that sunshine? Could Spring really be here? We hope so there's plenty going on here at the House and a bit of sunshine will make life a whole lot easier! Find out what's on at our website www.wchi.com.au where you can book online or call us on 9716 3361.

Whittlesea Community House AGM will be held on Thursday 17th October at 11.00am. Come along and be part of your community. Join our committee, become a volunteer. Get involved!

Save the Date

Uke Muster COMING SOON!

Get ready to strum along, perform and learn heaps.

Saturday 12th October - register now ITS FREE

<https://www.socialplanet.com.au/activity/view?id=23984>

Workshops at Whittlesea Community Garden

Propagation Workshop Thursday 26th September 10.30am - Noon FREE

Seed Collecting Thursday 17th October 10.30am - Noon FREE

Visy Recycling

Over the counter recycling is available Monday, Wednesday and Thursday each week 10am - 3pm and Saturdays from 8am - 4pm. Please note that we are not open on Public Holidays.

Got some time on your hands and looking for an easy and regular volunteering role (perhaps to meet your Centrelink obligations). Look no further! Our recycling team is seeking volunteers for regular shifts call 9716 3361 to discuss.

Are you a group or club? Did you know that you can register as a donation partner and receive the 10 cent return on recyclable items as a donation from the community? Go to <https://cdsvic.org.au/donation-partner-registration>

Community Meals

Big Blokes Brunch meet at the Whittlesea Community Activity Centre on Tuesdays! Join the blokes for brunch each week: Tuesdays 11.00am - Noon \$2.00 per person

Ladies Lunch -join the ladies who lunch each fortnight at the Whittlesea Community Activity Centre. Thursday 12th September RU OK Day 11.30am - 1.00pm \$2.00 per person

First Aid (CPR, Provide First Aid & Provide First Aid in an Emergency in an Education & Care Setting). Online learning + face to face Saturday 5th October \$85/\$150/\$195

Boat Licence

Our next Boast Licence

Saturday 19th October 9.00am - 1.00pm \$150 per person

Students from 12 years are eligible, PWC issued to >16 years

Op Shop Tours

We are trekking to Op Shops all over Melbourne twice a month in 2024 and you can join us.

Saturday 16th November 1.00pm - 4.00pm \$10 per person

Mental Health First Aid Returns!

Just like regular first aid, mental health first aid is the assistance given in a crisis. This course will ensure you can identify a crisis or the potential for one and be in a position to provide support to a person until professional help is provided. Perfect for anyone working, volunteering or who has contact regularly with family or friends who are vulnerable

Two Day course - Wednesdays 9th & 16th October 9.00am - 5.00pm \$240/\$140 concession

Fix It Friday RETURNS!

Fix it Friday is returns this month! Sweep your problems into a pile and bring them to our experts for real help that doesn't involve a queue or a call centre!

Meet experts from Whittlesea Community Connections, Social Worker, Espresso Legal, Uniting Financial Counselling, NDIS, Centrelink and Neami National (Mental Health Program), Victoria Police, My Aged Care, No Interest Loan Scheme, Haven Homesafe, Gamblers Help and heaps more!

Call 9716 3361 to register in advance, it's FREE

Friday 20th September 10am - 1.00pm

Pop in during open hours for a cuppa Mon - Thurs 10am - 3pm. Food relief pantry packs are available during office hours or visit our community pantry 7 days a week open all hours (out the front of the House - 92A Church St). Pet food relief is also available for dog and cat food during office hours.

Kilmore Golf Club Inc.



September is a busy month with the start of competition golf once again after a somewhat cold winter. Tee off times were changed to accommodate players who did not enjoy starting early.

The Kilmore ladies will be holding their Annual Tournament sponsored by T J Scott & Family who have sponsored this event over a number of years. The Club appreciate their continued support.

The Kilmore Open will be held on Saturday 21 September with a 4BBB Mixed & Men's event. and Sunday the Men's Open Tournament. Entries can be forwarded to Rod Williams:

rodneycwilliams121@gmail.com. Cost for Sat \$40 per pair & Sunday \$30 pp.

Payment can be made directly to Bendigo Bank BSB 633000 A/C 147888275

Further details on our Website kilmoregolfclub.com.au. Please ensure you add the event you are paying for. Cloud Distillery will be sponsoring the weekend event and they are promising some interesting prizes for winners.

The Grand Final holiday Friday 27th the Club will be holding an Ambrose. Expressions of interest can be sent to info@kilmoregolfshop.com.au Details once again will be on our Website.

KGC has a new booking in system called Mi Score. The club were successful in a grant from the Federal Government facilitated by Rob Mitchell. This has cut down administration time for volunteers before and after competitions. Players use their phones to score each hole and results are sent directly to the administrators.

The golf shop is not always tended so if players wish to hire carts please contact the club via phone 57821123 or 0437712973 a day before. Carts will not be hired after 12.30 pm.

For walking players use the Honesty box to make payments \$25 weekdays & \$30 weekends. Alternatively, payment can be made by direct debit (instructions in the box)

The function room is available for hire for community groups by emailing info@kilmoregolfclub.com.au or ph.: 57821123 and leaving a message.

There are a number of membership opportunities at KGC so check our website for a package which suits you. Social passes, Distance memberships, First time members.

Further enquiries can be made to info@kilmoregolfclub.com.au or call 03 57831123 to leave a message.

There are a number of membership opportunities at KGC so check our website for a package which suits you. Further enquiries can be made to info@kilmoregolfclub.com.au or call 03 57831123 and leave a message.

Enjoy a game of golf without the crowds in peaceful surroundings and play a well-maintained golf course. Meet our friendly members.

WANDONG PUBLIC HALL

VALE SUE MARSTAELLER

This month the Wandong Public Hall Committee of Management would like to recognise the great contribution Sue Marstaeller made to our town, to Mitchell Shire and as a member of our hall for many years.

We were very sad to hear that Sue has passed away and we pass on our sincere condolences to Ian, Kim, Guy and Ali and their families.

ANNUAL GENERAL MEETING

The Wandong Public Hall ANNUAL GENERAL MEETING will be held at the hall in Rail Street at 5pm on Wednesday 25th September.

All positions will be declared vacant and a new committee elected.

ALL WELCOME

We are always in need of new members who would like to assist in the care of the hall and it's upkeep.

Get a coach in your corner

Do you regularly look after a family member or friend with disability, mental illness, age or health issues? Does this affect your ability to work, study or socialise? If you answered yes, Carer Gateway can help you with free services such as counselling, tailored support, respite, support groups and more.

Carer coaching is about taking time to think about how you are going, how you'd like things to be and how you might take steps towards making that happen.

Through your local Carer Gateway service provider FamilyCare, we work with you to create meaningful change and support you while you progress towards your goals.



Visit www.carergateway.gov.au or call **1800 422 737** today to find out more



WANDONG TENNIS CLUB

Email: wandongtennisclub@hotmail.com
or text Lisa on 0407 112 880.

Information is posted on our Facebook page.

www.facebook.com/wandongtennis

Good luck to our Saturday afternoon section 2 team in the grand final on 7/9
Also good luck to our junior teams playing in semi finals on Saturday 7/9
Wandong section 2 and section 3

Our night season is well underway with mixed results.

We have had to put up with done really wild weather over the last few matches

Fees are now overdue. If you haven't paid please pay ASAP

Coaching is available at the club

Please contact Karl on 0423 611 317 or kv.tennis@hotmail.com



THE SHACK IS BACK

The Upper Plenty Community Hall

“THE SHACK”

is open for hire.

For information and bookings call

Susan or Wayne on 0499 907 017

If not answered leave your name and number and we will return the call.

FRIENDS OF DISAPPOINTMENT

Are you interested in the history, conservation and community of the Mount Disappointment State Forest and surrounding areas.

Join “Friends of Disappointment” to share history, photos and ideas.

<https://www.facebook.com/mountdisappointmentclonbinane/>



THE COMBINED PROBUS CLUB OF WHITTLESEA INC.

REGISTERED # A0041714F

Established 2001

MEDIA INFORMATION

MICHAEL B HALLEY PUBLICITY OFFICER

Contacts at the Club

Glenda Vincent: Membership 0431 517 008

Cheryl Manicolo: President 03 9715 1420

Email whittleseaprobus@hotmail.com

Is it a bird or Ray?

At the August meeting of the Combined Probus Club of Whittlesea Ray Cronin OAM, the founder of Kestrel Aviation located at Mangalore was the guest presenter. [Ray and his wife Eleanor are joint owners]. If you have ever watched a hovering helicopter it is very much like the Australian Native bird the Nankeen Kestrel.

Kestrels are most easily distinguished by their typical hunting behaviour which is to hover at a height of around 10 –20 metres over open country and swoop down on ground prey. Kestrel Aviation's helicopters often hover to conduct many operational tasks. So the company is well named!

Mr Cronin will next year mark fifty years in the Aviation industry with more than forty dedicated to helicopters. In 2018, Ray was elected to be the President of the Australian Helicopter Industry Association and was awarded the Royal Aeronautical Society's Col Pay Award for a Lifetime of Service to General Aviation. He was also recognised with the Order of Australia (OAM) for services to the aviation industry in the 2024 Australia Day Honours List.

As he fronted the podium and placed his notes he remarked "a pilot always needs a check list" but as the morning unfolded he proved that the check list had been memorised. The company has developed from a training establishment to the foremost aerial firefighting organisation in Australia, which also operates overseas. Underpinning the corporate decisions is to develop Australian units with specialised equipment and combat overseas competition.

We learnt about the strategy to "hit the fire early". In the development years by the time an aerial attack was mobilised as much as fifty acres would have been burnt. Now with instant despatch Kestrel are noticing that they are spending less time in the air because they are able to contain the fires early in a lot of cases. Harking back in time for a minute Mr Cronin recalled that in 1967 it was common for the plane occupants to experiment with basic water dispensing devices. Today as much as 10,000 litres of water can be placed exactly on the seat of the fire in one pass.

The helicopter fleet used by Kestrel have their origin based on military designed units that have inherent strength to allow for modifications and the stresses that firefighting manoeuvres entail. A typical pick up and fill can be a quick as nineteen seconds and a drop in point eight of a second. Extra specialised rappel teams are deployed in East Gippsland and North East Victoria where lightning strikes are regular. These teams locate the origin of the lightning strike and rappel up to 300' through the tall timber and can also have access to water from the helicopter by a crewman lowering a ninety metre long hose for them to attack the outbreak. A number of videos were shown and it was clear that the technology has moved a long way from the early pioneering days. One was the Sikorsky U460A Black Hawk that carries 4000 litres in a Kestrel designed belly tank at a maximum of 333 km/hr. It cannot carry passengers due to its restricted category certification but has the agility and strength to support battlefield operations, the crew have live visibility of their support teams by GPS tracking displayed on screens in the cockpit.

Kestrel was the first Australian owned company to gain approval to conduct night aerial firefighting, which includes the ability to conduct hover fill operations from natural or man-made water sources with the assistance of the Aviation Night Eyes NVIS goggle system. Hover fill is considered an essential capability given the unique operational landscape within Australia and its successful application is considered an international first. The largest airframe in their fleet is equipped for Night role and other multifunction tasks and is a Super Puma 19 passenger helicopter affectionately known as 'Shadow Cat'.

Mr Cronin could have continued long past the allocated presentation time, but managed to wrap-up and still take audience members' questions. In his address he gave a lot of praise to his executive, engineering and aviation staff. A round of applause and a token gift of appreciation from Teresa Carlin the Speaker coordinator brought the session to a close.

It is often stated "Henry Ford started with one car!" Ray Cronin started with one helicopter and has developed a world leading aerial firefighting company. But unlike Henry's mob Kestrel Aviation is committed to Australian manufacturing.



PHOTOS:

Right:
Ray
Cronin
Kestrel
Aviation
and
Left:
Members
of
audience



WJFC 2024 SPONSORS

