



The L.B. Davern Reserve is open to all our community, so please come down and enjoy this great facility, join the various clubs, just walk along the Say G-Day trail, take the kids down to play on the play equipment or just play and exercise on the oval. Tennis is on, Cricket finals are in progress, Dog Club, and the Horse Clubs, the Stadium activities -Basketball, preschool and Wandong Primary are all operating.

Junior Football and Netball Clubs are busy organizing their Registration days and preseason has started, watch out for them and please support our Junior Clubs.

Kilmore Cricket Club are at the Reserve, Senior, Junior and the Female teams on Saturday mornings and afternoons.

The Wallan Junior Football club is at present training at the Reserve, on a Monday due to works over at the Wallan Greenhill Reserve.

Please be cautious around the Reserve at present due to various sighting of snakes being reported. Also as the Reserve is busy with activities just a reminder to all when driving to be cautious and the speed limit is 10 kilometres



The L.B. Davern Reserve Committee has named the back recreational area at the L.B. Davern behind the Wandong Stadium the Allen Ryan Paddock in honour to Allan due to his commitment and dedication to the Community of Wandong/ Heathcote Junction.



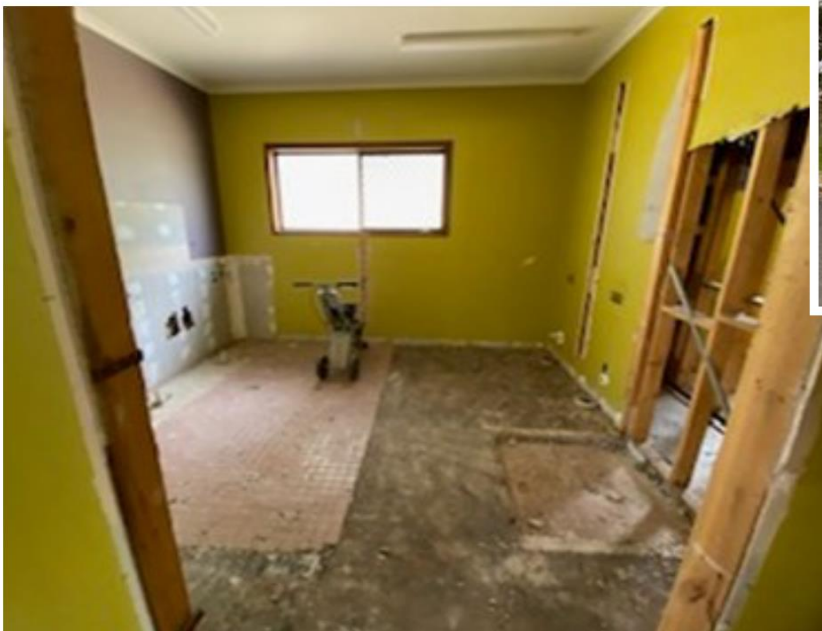
### L.B. Davern Reserve Projects update:

#### Project 1: Redevelopment of the Community centre.

Revitalise the centre to contemporary standards by reconfiguring and upgrading the internal floor plan, which will create a versatile, multi-purpose centre for shared community use. This project is an \$800,000+ project.

The redevelopment of the Community centre at the Reserve is well under way with the construction stage with the building now fenced off to the community. Due to the project the Reserve committee will not be taking any bookings for the centre until mid-2024.

Progress is happening very quickly as the Community centre transforms to a updated facility.

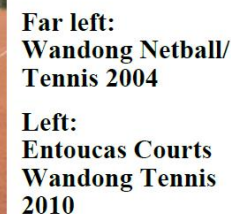






**If anybody in our community would like to share any photos of history of L.B Davern Reserve for us to share on What's News please send to [kooraw@bigpond.com](mailto:kooraw@bigpond.com)**

**We need to catch any persons vandalizing our Reserve!!!! If Residents notice anything out of the ordinary please contact the police on 000 It is in our community interest that we all keep our Reserve safe for all to use!!**



**Unfortunately the Community Centre is not open for bookings until the Refurbishments of the Centre is completed April 2024**

[illegible]

**RIGHT:**  
**Community  
Centre  
2004**



**For all L.B.Davern Reserve Bookings to either:**

- Oval Bookings, Stadium bookings and enquiries  
Mitchell Shire Council  
Recreation and Open Space unit ph. 5734 6200.**
- Community Centre and Sports Pavilion contact:  
Darlene Gunter  
Booking Officer for the WHJSCC  
on 0418 312 762**

**Rob Telfer, President,  
Davern Reserve Committee  
12 Dry Creek Cres,  
P.O.Box 303,  
Wandong 3758  
Mobile 0408 393 250**

