

CLONBINANE C.F.A.



Spring has finally arrived which means the fire season is not too far away.

According to the Australian Seasonal Bushfire Outlook we are likely to experience an early start to the fire season, with drought affected areas facing an increased risk.

Now is the time to.

- Cut back over hanging branches (no branches within 10m of buildings)
- Remove shrubs, plants and other flammable materials from the bottom of your trees
- Look for bark and dead branches hanging off your trees
- Keep shrubs and other plants pruned and away from your house
- Don't leave piles of green waste near your home (take it to the tip or, if you can burn off before restrictions come into force)

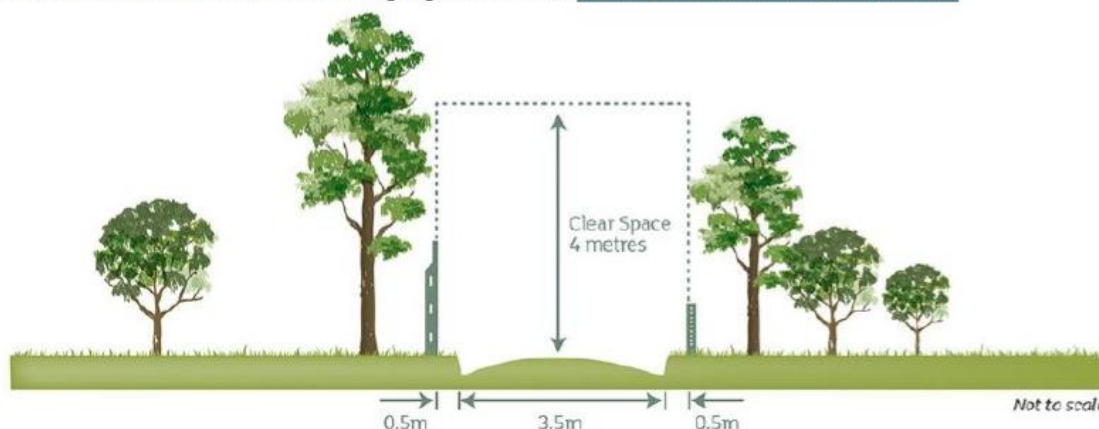


When preparing for summer you also need to consider whether a fire truck will have clear access to your property.

Did you know we need 3.5 metres for the width for our trucks? With an additional 0.5 metres clearance to pass through gates or to move past structures.

We also need 4 metres above to be clear of obstructions to avoid damage to our equipment and crews. How long is your driveway? Is there somewhere safe for us to turn around?

For more information on how to prepare head to www.cfa.vic.gov.au/plan-prepare



Whilst we ask the community to prepare, we will also be doing the same. Members train on Sunday mornings and Wednesday nights where we will put our skills to the test, check over access to our local water supplies (access to properties and water levels of dams) and provide community education.

Stay safe and be prepared.